

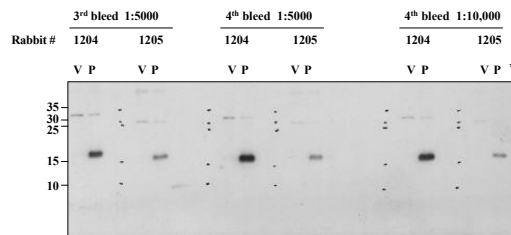
### Product Specification Sheet

Anti-Human Prostaglandin E  
Synthase  
Product Number: PG15  
Aliquot: 100  $\mu$ L  
Lot Number: 061702DM  
Storage: -70°C

<b>DESCRIPTION:</b>	Anti-Human Prostaglandin E Synthase
<b>HOST:</b>	Rabbit
<b>STORAGE BUFFER:</b>	DPBS
<b>MOLECULAR WEIGHT:</b>	18,000
<b>STORAGE:</b>	-70°C, Avoid multiple freeze/thaw cycles
<b>CROSS REACTIVITY:</b>	Human, Mouse, Rat
<b>IMMUNOGEN:</b>	Human Prostaglandin E Synthase
<b>PURIFICATION:</b>	Antiserum
<b>APPLICATIONS:</b>	For Western Blotting with ECL, use a 1:1000 dilution with the following conditions: Incubate with the primary antibody for 2 hours. Incubate with the secondary antibody for 1 hour. Extra washing is recommended to reduce non-specific background. Use an exposure time of 45 seconds.

#### PGES antibody test

30 sec exposure



\* V = vector-transfected HCT-116 cells  
P = PGES-transfected HCT-116 cells